



# Major Customer Connections

Insights Data



Project data quarterly update – October 2024

# Summary

For our major customers with large-scale grid connection opportunities, this report will provide information on the following:

- Volume of project work being undertaken
- Average timeframes for each project phase
- Data relating to project type, industry, and region

New and improved major customer connection processes were implemented on July 1, 2024. Western Power anticipates reduced timelines between the project stages with these new processes. However, the data presented in this slide pack is based on historical averages and does not reflect the expected timeframes for the new projects. Until more data is available, these are historical views of customer and Western Power timelines.

- Inactive projects have been excluded from the report
- These data insights will be updated where appropriate and published each quarter.



# Data Definitions

## Project Phases

**Enquiry** - The Enquiry phase provides guidance on the information required to complete a Connection Application form. An Enquiry Assessment will assist you to identify a suitable network connection point and evaluate the feasibility of your project.

**Initiation** - The Project Initiation phase involves identifying network constraints applicable to your application, assessing if your application is competing for network capacity, and identifying viable options to modify the network to meet your requirements.

**Scoping** - The Project Scoping phase involves developing a scope of work for each option to modify the network, assessing each option, and selecting the final technical solution to be implemented.

**Planning** - The Project Planning phase involves Western Power preparing business cases, contracts, preliminary designs and estimates, and construction plans for the final technical solution to modify the network.

**Construction & Commissioning** - The required network modifications are then constructed and commissioned by Western Power under the terms of the Interconnection Works Contract (IWC).

**Close out** – Once constructed and commissioned, we can formally close out the project.

## Other Definitions

**Time in Each Stage** – the number of calendar months in each stage defined as the time between the change from one stage to the next. (This includes the duration in a stage for a project that has passed that stage i.e. a project in Construction will have a days in stage for all preceding stages)

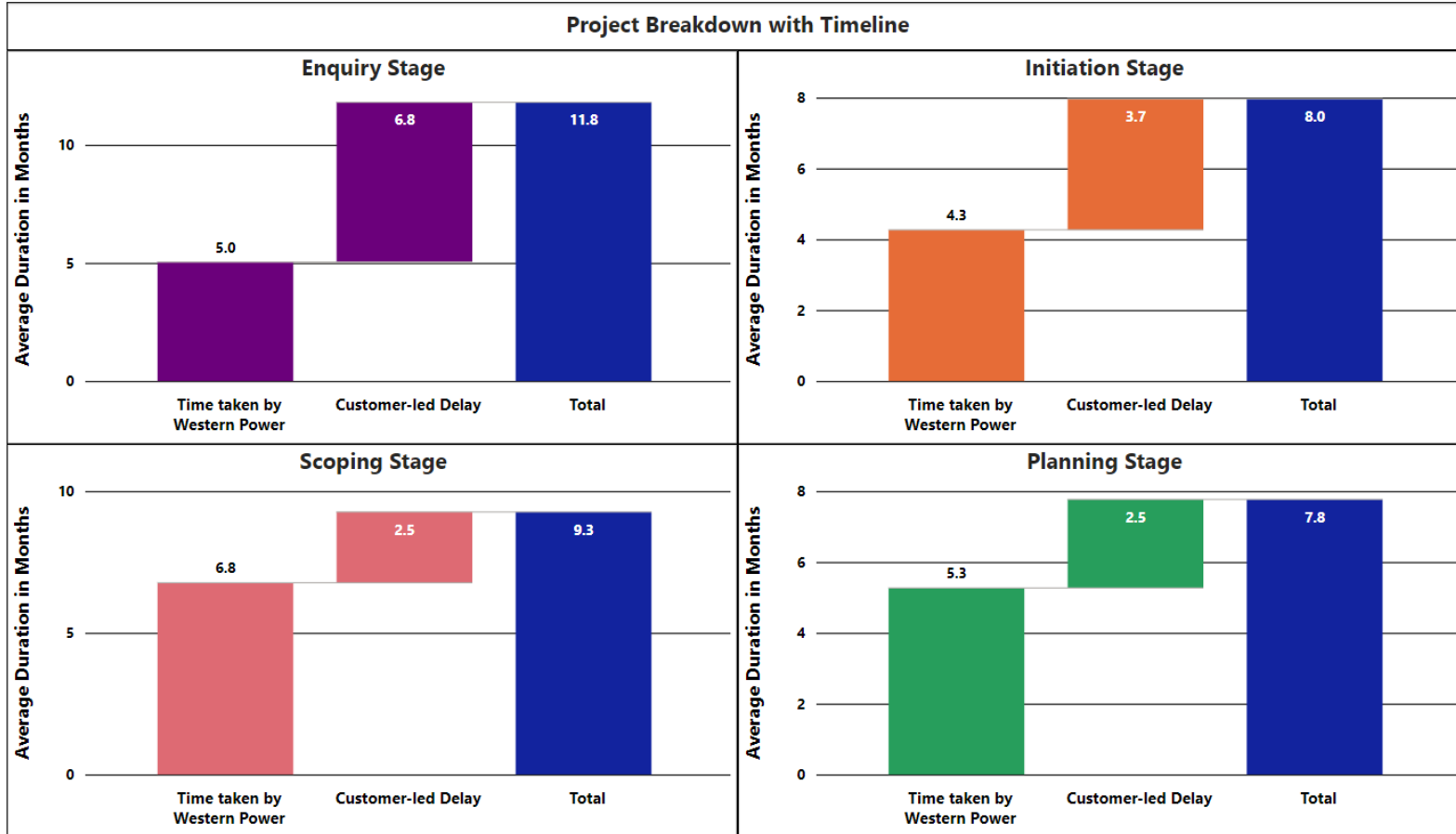
**CMD** – Contracted Maximum Demand (Load)

**DSOC** – Declared Send Out Capacity (Generation)

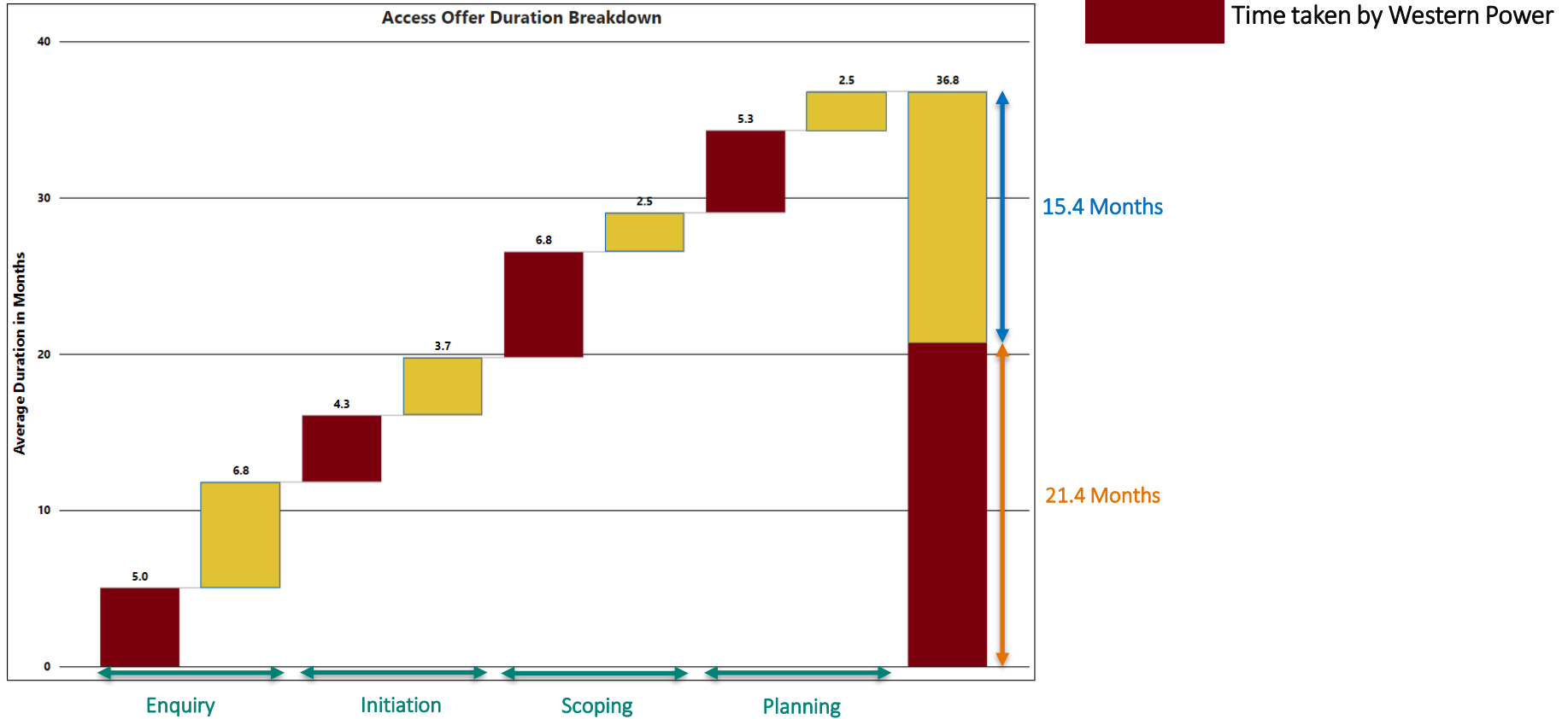
**Access Offer** - Form of contract developed under this applications and queuing policy which has been signed by Western Power and is in such a form that it can, without anything else being required, become an access contract when signed by an applicant.



# Time in Each Stage



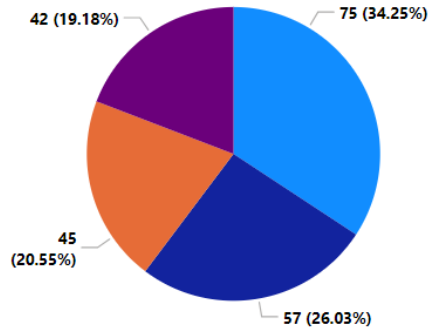
# Access offer Duration



# Project Distribution (Region)

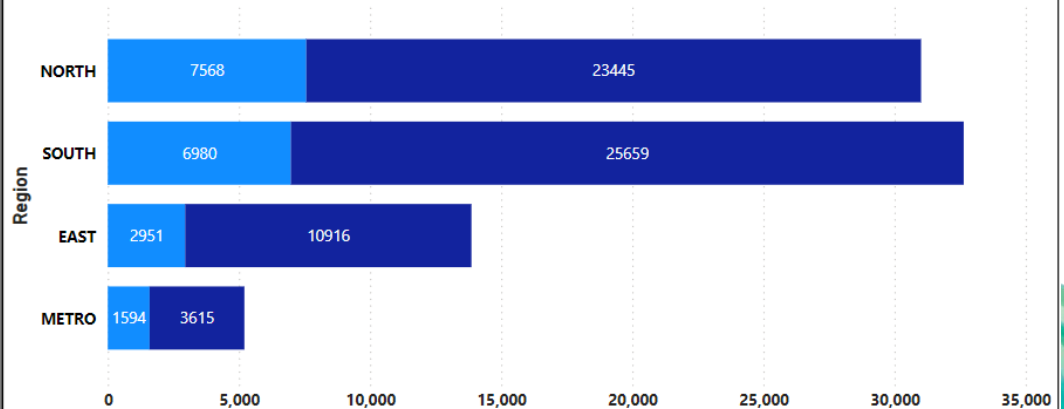
Connection Type Active Stage	BESS			Generator			Load			Load & Generator			Total		
	Projects	DSOC (MW)	CMD (MW)	Projects	DSOC (MW)	CMD (MW)	Projects	DSOC (MW)	CMD (MW)	Projects	DSOC (MW)	CMD (MW)	Projects	DSOC (MW)	CMD (MW)
1. Enquiry	21	6,423.89	5,602.00	67	44,007.71	6,173.60	11	18.00	1,201.80	6	904.90	150.00	105	51,354.50	13,127.40
2. Initiation	9	1,870.00	1,870.00	26	6,802.91	670.80	11	84.00	1,301.00	2	2.48	5.50	48	8,759.39	3,847.30
3. Scoping	1	150.00	150.00	4	242.00	0.00	8	0.00	91.45	2	0.00	30.00	15	392.00	271.45
4. Planning	1	100.00	100.00	9	977.00	0.00	4	0.00	188.10				14	1,077.00	288.10
5. Construction & Commissioning	5	1,330.00	1,330.00	13	453.57	60.10	10	0.00	152.22	2	38.00	6.00	30	1,821.57	1,548.32
6. Close Out				5	230.00	0.00	2	0.00	10.11				7	230.00	10.11
<b>Total</b>	<b>37</b>	<b>9,873.89</b>	<b>9,052.00</b>	<b>124</b>	<b>52,713.19</b>	<b>6,904.50</b>	<b>46</b>	<b>102.00</b>	<b>2,944.68</b>	<b>12</b>	<b>945.38</b>	<b>191.50</b>	<b>219</b>	<b>63,634.46</b>	<b>19,092.68</b>

Projects by Region



Region  
● SOUTH  
● NORTH  
● METRO  
● EAST

Sum of CMD Increase (MW) Sum of DSOC Increase (MW)

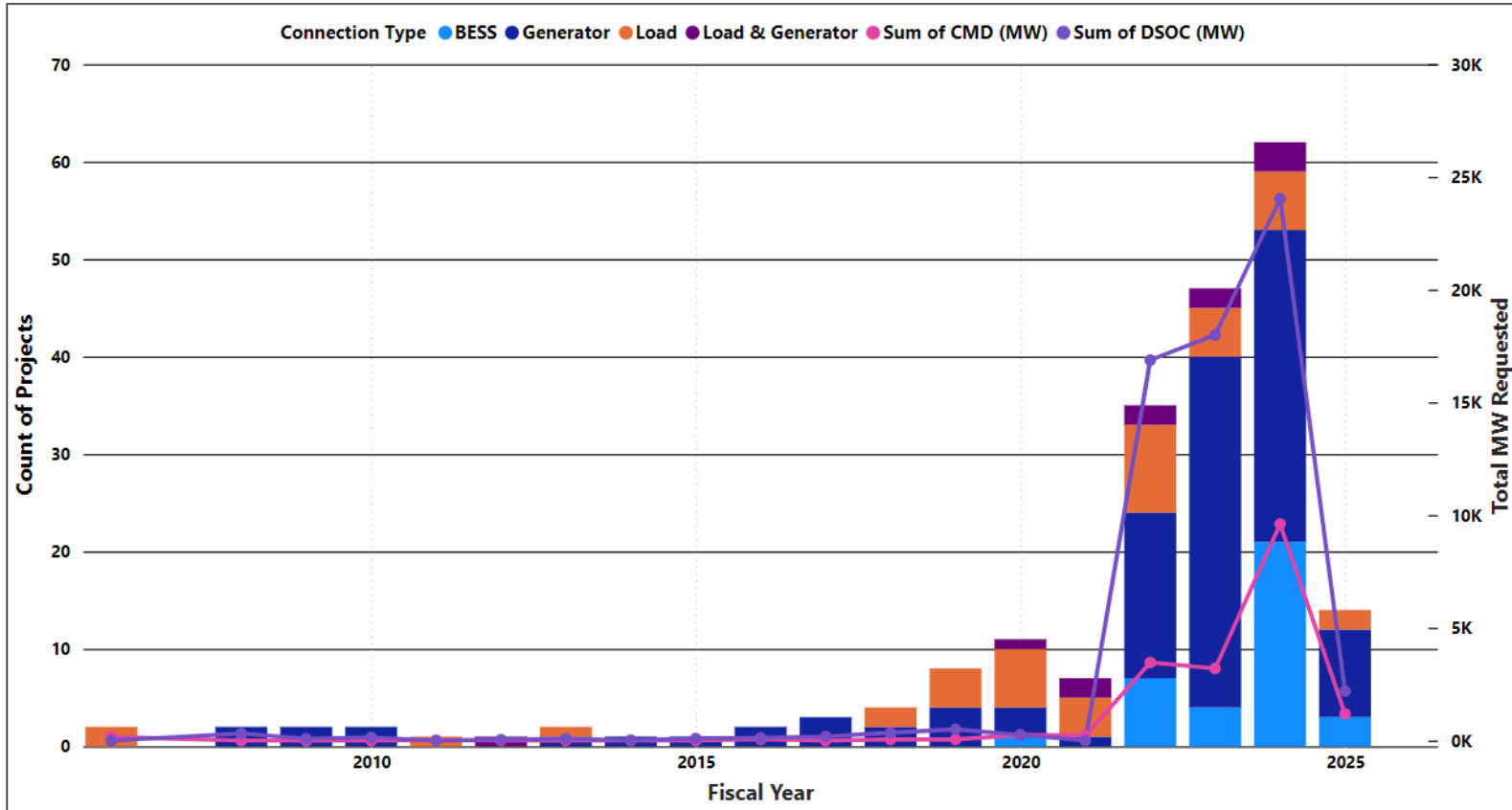


# Project Distribution (Industry)

Connection Type	Projects	DSOC (MW)	CMD (MW)
<b>BESS</b>			
Battery	29	6,403.89	6,402.00
Generation - Other Renewable	2	1,600.00	1,600.00
Generation - Solar Farm	3	750.00	550.00
Generation - Wind Farm	2	1,000.00	500.00
Mining	1	120.00	0.00
<b>Generator</b>			
Battery	8	475.00	310.00
Data Centre	1	0.00	50.00
Generation - Non-Renewable	9	947.98	0.80
Generation - Other Renewable	12	315.80	105.20
Generation - Solar Farm	17	2,368.50	810.00
Generation - Wind Farm	67	45,825.48	3,576.50
Hydrogen / Ammonia Production	2	2,500.00	2,000.00
Mining	4	269.00	52.00
Processing / Manufacturing	1	4.00	0.00
Retail	3	7.43	0.00

Connection Type	Projects	DSOC (MW)	CMD (MW)
<b>Load</b>			
Agriculture	1	0.00	9.10
Battery	1	0.00	95.00
Data Centre	2	0.00	614.00
Government Agency	7	0.00	571.80
Health Care	2	0.00	7.60
Hydrogen / Ammonia Production	4	84.00	950.00
Mining	20	18.00	564.43
Processing / Manufacturing	5	0.00	106.35
Transport	4	0.00	26.40
<b>Load &amp; Generator</b>			
Generation - Non-Renewable	1	0.00	20.00
Generation - Other Renewable	3	339.48	107.50
Generation - Solar Farm	3	600.00	9.00
Hydrogen / Ammonia Production	1	0.00	10.00
Mining	2	1.00	34.00
Processing / Manufacturing	1	4.90	0.00
Transport	1	0.00	11.00

# Enquiries Over Time





# Quarterly Overview

New Enquiries	Access Offers Issued
16	3

New Connection Applications
7

## Movements in this quarter

Stage Change	Project Count
Enquiry to Initiation	7
Initiation to Scoping	2
Scoping to Planning	0
Planning to Construction	3
Construction to Close Out	2